

IMAGECHECKER P400PD

*Innovative touch-panel based
machine vision system*

*The Imagechecker P400PD combines
a compact, functional, and safe
system with a modern control
concept.*



The advantages of a touch-screen PC and the powerful, flexible and tried-and-tested Machine Vision P400 software make the Imagechecker P400PD a cost-effective and smart solution for all kinds of visual inspections tasks.

All-in-one device with touch screen

The Imagechecker P400PD combines an efficient industrial PC with a touch-sensitive monitor in a compact and robust casing. The small size allows installation directly at or in the machine, while the touch-screen technology helps users to operate machinery easily and comfortably. Thanks to the multiple interfaces, it is easy to integrate the Imagechecker into existing systems. In addition, the P400PD sports many features, making it one of the safest and reliable systems available.

Including first-rate vision software

The P400PD includes the tried-and-tested Vision P400 software in the latest Essentials version and is ready to use. This machine vision software allows you to benefit from expertise developed over decades – no programming skills necessary! Sophisticated inspection algorithms designed for multiple tasks can be combined to realize your individual image-processing routine that can be modified any time. In addition, you can customize your inspection routine by embedding your own algorithms into Vision P400. The advantages of a touch-screen PC and the powerful, flexible and tried-and-tested Vision P400 software make the Imagechecker P400PD a cost-effective and smart solution for all kinds of visual inspections tasks.

High performance, low cost

The P400PD uses a CPU with an Intel Atom processor, teaming up an efficient computer architecture with advanced gigabit Ethernet camera technology. What you get is a machine vision system with an impressive price-performance ratio. The P400PD lends itself to a multitude of typical industrial inspection task and can cope with even highly demanding applications.



Touch screen with brilliant colors

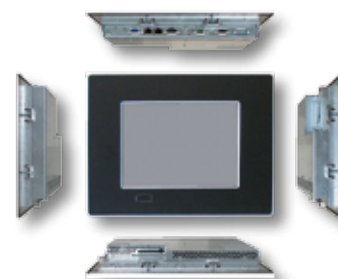
The touch screen allows for intuitive operation using your finger or a stylus. The robust casing houses a display with clear and brilliant colors: 262,000 colors for the 10.4 inch panel or 16,200,000 for the 15 inch panel. With its IP65-compatible front, the P400PD is suitable even for rugged industrial environments.



Easy integration into existing systems

Thanks to its compact size, the P400PD can easily be integrated into existing systems and machines. You can choose between two different panel sizes: 10.4 inch or 15 inch. In any case you will save space because display and computer form a compact unit.

The P400PD comes equipped with standard interfaces like RS232, USB and LAN, but can also be equipped with a Profibus port. Communication with other applications such as databases or customized user interfaces can be realized with the ActiveX® interface.



Cameras with GigE technology

The innovative P400PD can be used with gigabit Ethernet cameras and modern network components, making it a perfectly designed and powerful system. Hence, integrating gigabit Ethernet network technology into your application can be done easily and safely. Standard components like switches and cables with various lengths to choose from help you keep installation costs low.



Enhanced reliability

With its combination of mass-market technology and field-proven hardware, the P400PD reaps the benefits of using fully developed components that have stood the test of time. Since the P400PD does not have a fan or hard disk or any other moving part, it is very reliable and designed for a long life. The file based write filter makes sure that the installation of the operating system Windows® XP Embedded is protected. For example, this protection prevents files from getting damaged when the system is shut down in an uncontrolled manner.



Machine vision software Vision P400 Essentials pre-installed

The tried-and-tested machine vision software developed by Panasonic allows you to configure your inspection tasks simply and intuitively. Vision P400 Essentials offers first-rate algorithms for almost all typical inspection tasks like measuring, contour checking, part identification, feature extraction, 2D-code reading and many more. It is possible to access Vision P400 with customized user interfaces with the help of the ActiveX®-interface. The touch screen allows you to change parameters using your finger or a stylus.



Imagechecker P400PD



Part number	AIGN10X232MV1	AIGN15X232MV1	AIGN10XDPSMV1	AIGN15XDPSMV1
Display	10.4" TFT 256k colors	15.0" TFT 16.2 million colors	10.4" TFT 256k colors	15.0" TFT 16.2 million colors
Operating system	Windows® XP Embedded			
Software	Vision P400 Essentials			
Touch terminal	✓			
Front panel with IP65	✓			
Resolution	800x600px	1024x768px	800x600px	1024x768px
Memory	2GB RAM 4GB flash memory			
CPU	Atom N270; 1,6 GHz			
RS232	✓			
LAN	2x 10/100/1000Mbit/s			
USB	2x at the rear 1x at the front		2x at the rear 1x at the front	
Profibus	--	--	✓	✓
Power supply input	12-24V DC			
Dimensions	277 x 348 x 50mm	354 x 450 x 56mm	277 x 348 x 50mm	354 x 450 x 56mm

Cameras

Camera	VGA	1 Megapixel	2 Megapixel	5 Megapixel
Part number	ANPG830(P)D*	ANPG831(P)D*	ANPG832(P)D*	ANPG835(P)D*
Sensor	1/3" interline progressive scan CCD HAD technology	1/3" interline progressive scan CCD	1/1.8" interline progressive scan CCD	2/3" interline progressive scan CCD
Resolution (H x V)	656 x 494px	1032 x 776px	1624 x 1236px	2448 x 2050px
Chip size	1/3"	1/3"	1/1.8"	2/3"
Image capture	~ 1/90s	~ 1/28s	~ 1/16s	~ 1/15s
Exposure time	2 - 1/80,000s			
Lens mount	CMount			
Dimensions (H x W x D)	36 x 36 x 48mm (ANPG83xPD) / 36 x 36 x 58mm (ANPG83xD)			



* „P“ for power over Ethernet type. e.g. ANPG830PD
Without „P“ for standard type. e.g. ANPG830D

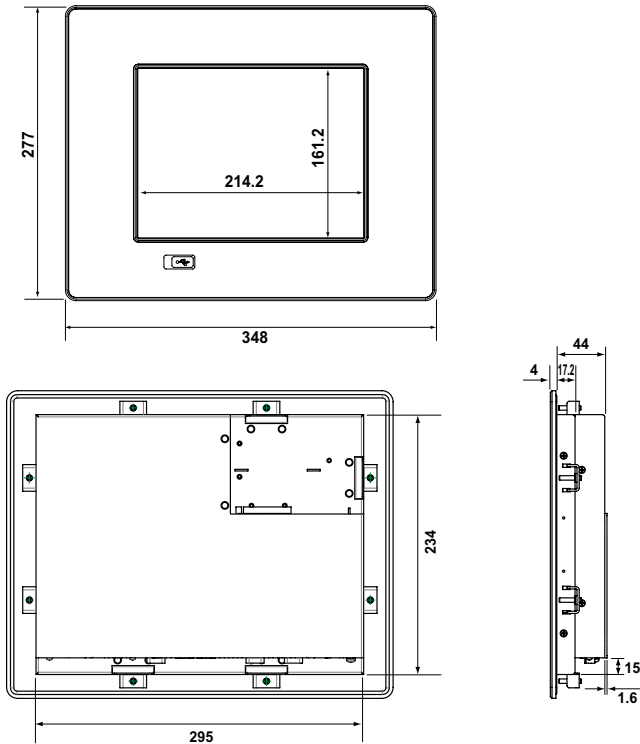
Camera accessories

Camera accessories	Power Injector	4 Port Power Switch
Part number	ANPG3700	ANPG3701
Description	Supplies voltage to 2 PoE cameras max.	Ethernet switch, Supplies voltage to 3 PoE cameras max

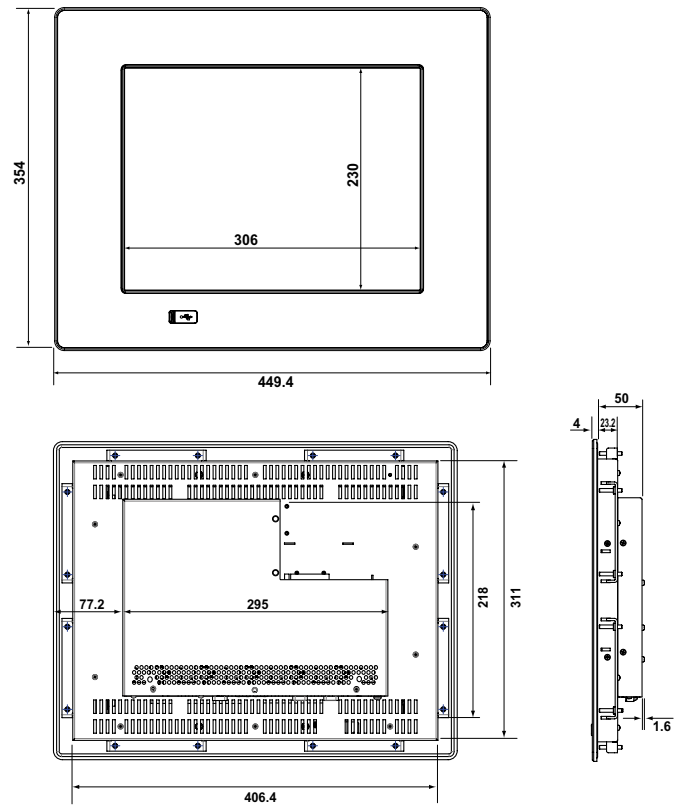


Dimensions

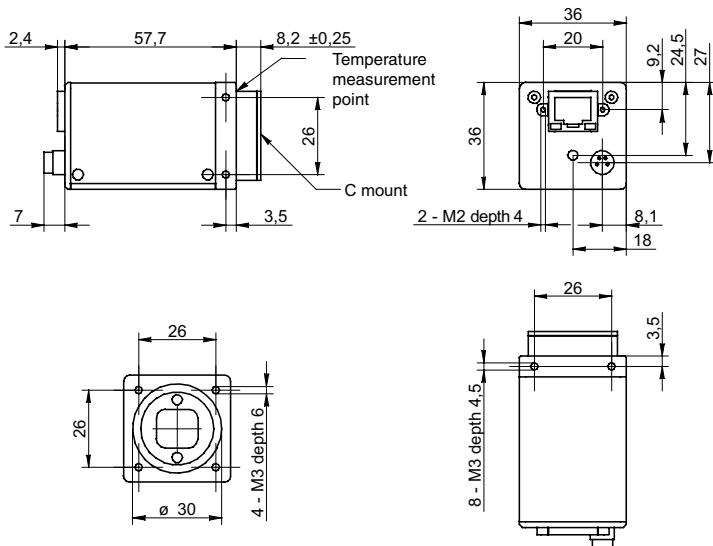
Dimensions AIGN10XDPSMV1 / AIGN10X232MV1



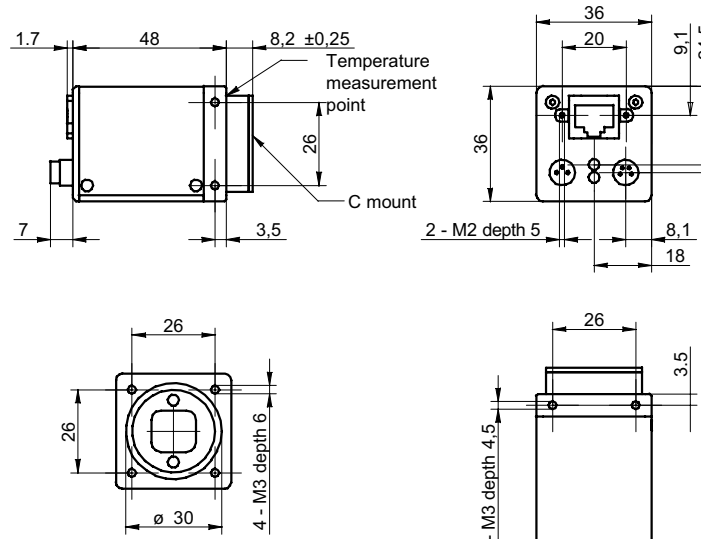
Dimensions AIGN15XDPSMV1 / AIGN15X232MV1



Cameras ANPG83XPD



Cameras ANPG83XD



Panasonic Electric Works Europe AG

Rudolf-Diesel-Ring 2 • 83607 Holzkirchen
 Tel.: +49 (0) 8024 648-0 • Fax: +49 (0) 8024 648-111
 e-mail: info-eu@eu.pewg.panasonic.com
 www.panasonic-electric-works.com

All dimensions in mm.

Panasonic®

Irrtümer & technische Änderungen vorbehalten
 Copyright © 2010 Printed in Germany